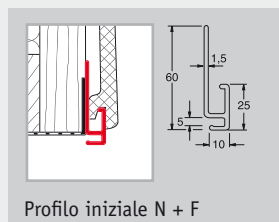


## Accessori per selekta ed heritage-selekta

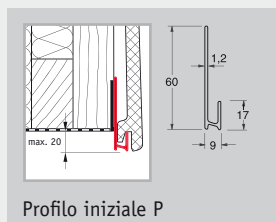
### Profili iniziali e profili di appoggio



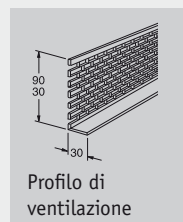
Profilo iniziale N + F



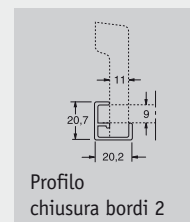
Profilo di appoggio



Profilo iniziale P

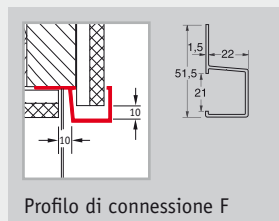


Profilo di ventilazione

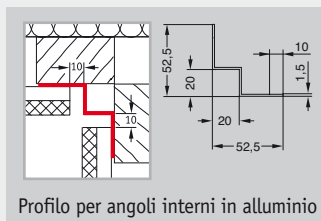


Profilo chiusura bordi 2

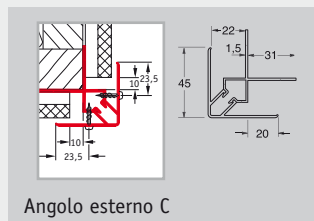
### Raccordi angolari



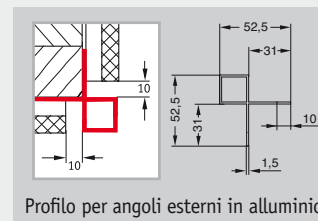
Profilo di connessione F



Profilo per angoli interni in alluminio

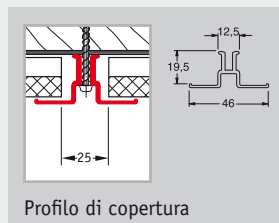


Angolo esterno C

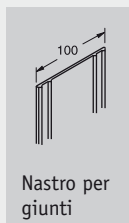


Profilo per angoli esterni in alluminio

### Giunti di testa

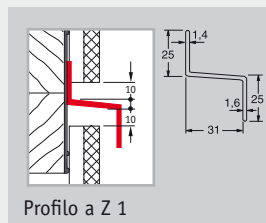


Profilo di copertura

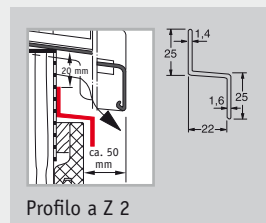


Nastro per giunti

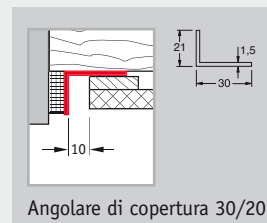
### Chiusure profili



Profilo a Z 1



Profilo a Z 2

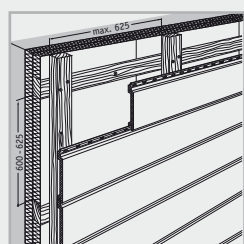


Angolare di copertura 30/20

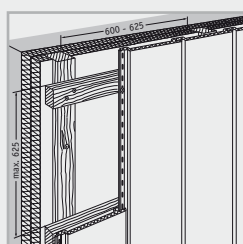
Dati tecnici	selekta 155	heritage-selekta
Larghezza profilo	170 mm	170 mm
Larghezza di copertura	155 mm (+1/-2 mm)	155 mm (+1/-2 mm)
Lunghezza profilo	5.400 mm	ca. 2.690 mm
Lunghezza di copertura	max. 5.400 mm	ca. 2.680 mm
Fabbisogno di materiale/m <sup>2</sup>	6,45 m	6,47 m
Classe di protezione antincendio	B2*, B1**	B2*
Superficie	struttura porosa, con coloritura già pronta o rivestimento decorativo	struttura porosa, con coloritura già pronta o rivestimento decorativo
Peso/m <sup>2</sup>	9,7 kg	ca. 9,7 kg

\* Standard: normalmente infiammabile \*\* Opzionale: difficilmente infiammabile

### Possibilità di posa

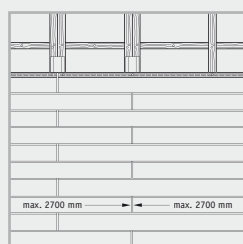


1. Posa orizzontale (selekta, heritage-selekta)



2. Posa verticale (selekta)

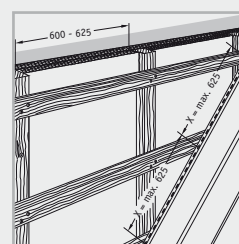
### Disposizione dei giunti



3. Posa orizzontale in posa a cassero (selekta)



4. Posa orizzontale con giunto verticale, rivestita con profilo di copertura (selekta)



5. Posa diagonale (selekta ed heritage-selekta)